

Model name	Category	Diaphragm walls kit available	Max dimension (mm)	Max depth (m)	Weight (ton)
HR 180 DW	DIAPHRAGMS	TR - BA	1.200 x 3.000	32	57 - 60

Grab Kit

Type guided with telescopic square section rod, rotation $\pm 180^\circ$

Winches

1st Winch Nominal Pullback	180 KN	40,500 lbs
2nd Winch Nominal Pullback	80 KN	18,000 lbs

Engine

Brand	CATERPILLAR	
Model	C9	
Power	242 KW @ 2.100 rpm	325 HP @ 2,100 rpm

Hydraulic System

Hydraulic Oil Tank	800 lit	211 gal
Fuel Tank	430 lit	114 gal

Crawler

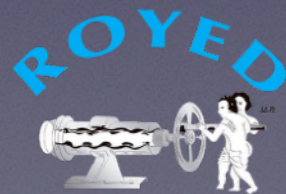
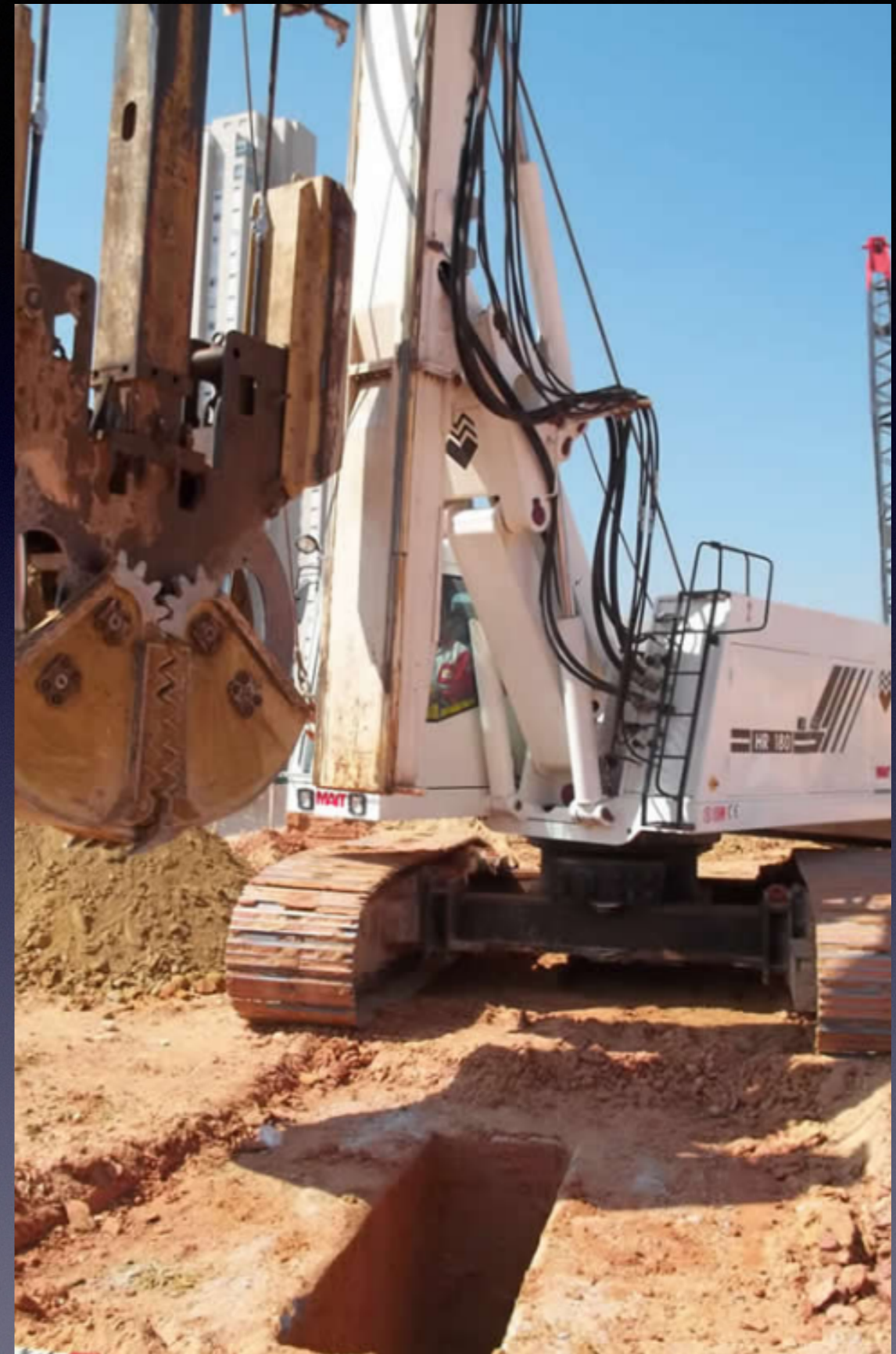
Length	4.900 mm	16 ft
Width	3.000 - 4.300 mm	9.5 - 14 ft
Shoes	800 mm	2.6 ft

Weight

Approx. Weight	57 - 60 ton	128,600 - 132,500 lbs
----------------	-------------	-----------------------

Diaphragm Walling

Max Size	1.200 x 3.000 mm	4 x 9.5 ft
Max Depths	32 m	105 ft



📍 Luis Freg No.3 Lomas de Sotelo. C.P. 53390. Naucalpan, Estado de México

Contacto: Rogelio Antonio Morales 📞 55 3097 4317 📧 rogelio.antoniom@royed.com.mx

🌐 www.royed.com.mx

📘 @royedmexico





